

# VPM's B.N.BANDODKAR COLLEGE OF SCIENCE (AUTONOMOUS), THANE

## DEPARTMENT OF BIODIVERSITY, WILDLIFE CONSERVATION MANAGEMENT (BWCM)

### 1.4.1 FEEDBACK ANALYSIS RELATED TO SYLLABUS 2022-23

#### STAKEHOLDERS


- STUDENTS - Current Students found M.Sc part I and M.Sc. Part II Syllabi good with respect to almost all parameters.
- TEACHERS - Most of the Teachers marked all syllabi as good in many parameters but some teachers found MSc Part I as average with respect to suitability for job demands, employability, skill development and entrepreneurship.
- ALUMNI - Previous year pass-out students found M.Sc syllabus good with respect to most of the parameters, but found it lacking with respect to developing employability, skill development and entrepreneurship
- EMPLOYER - Representatives of employing agencies perceived the current syllabus as good

### 1.4.2 ACTION PLAN REPORT RELATED TO FEEDBACK ANALYSIS OF SYLLABUS 2022-23

- In order to enhance job potential, newly introduced syllabi will be framed involving more skill based learning modules with emphasis on hands-on training and internships
- Novel certificate course/s will be initiated by the Department with entrepreneurship perspective.

  
I/C Principal



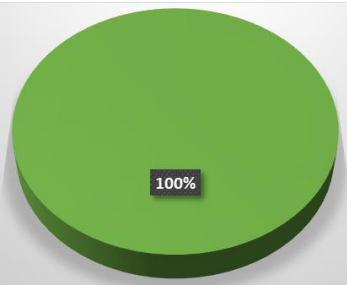
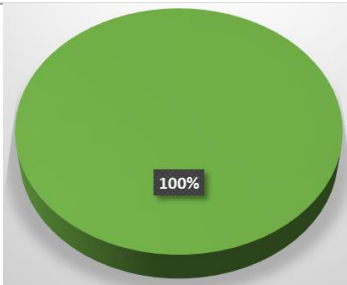
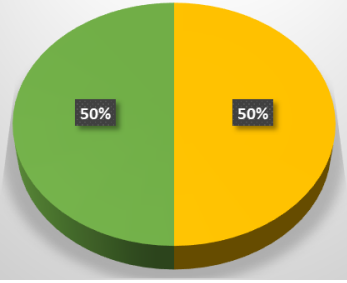
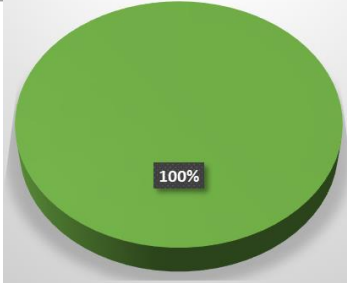
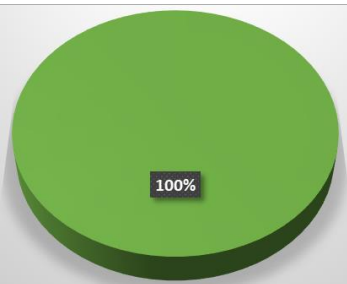
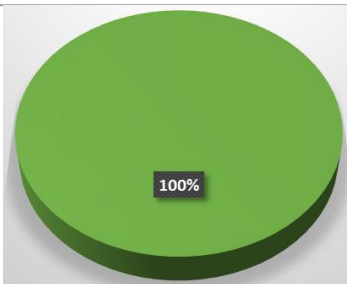
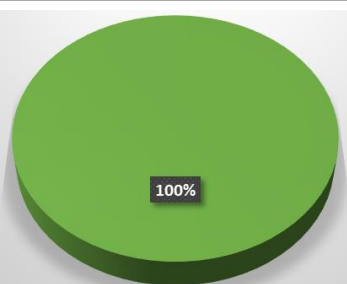
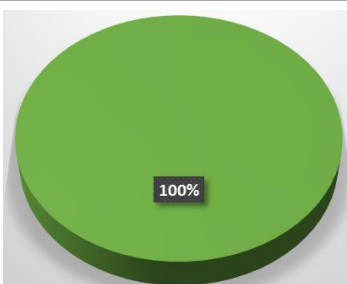
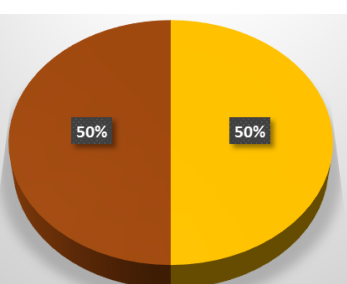
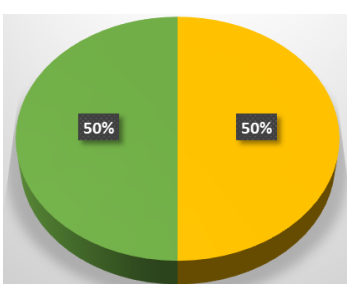
  
Coordinator Dept. of BWCM

# PG-Student's feedback related to Syllabus 2022-23

| Parameter                                    | MSc part 1 | MSc part 2                            |
|--|------------|---------------------------------------|
| 1.Design & Content of syllabus               |            |                                       |
| 2.Balance between Theory-Practical/ Tutorial |            |                                       |
| 3.Innovative-ness                            |            |                                       |
| 4. Knowledge Acquired                        |            |                                       |
| 5. Useful for career                         |            |                                       |
| 6. Significant suggestions                   | NIL        | More field work and hands-on training |

Key - Excellent, Very Good, Good, Average & Needs Improvement

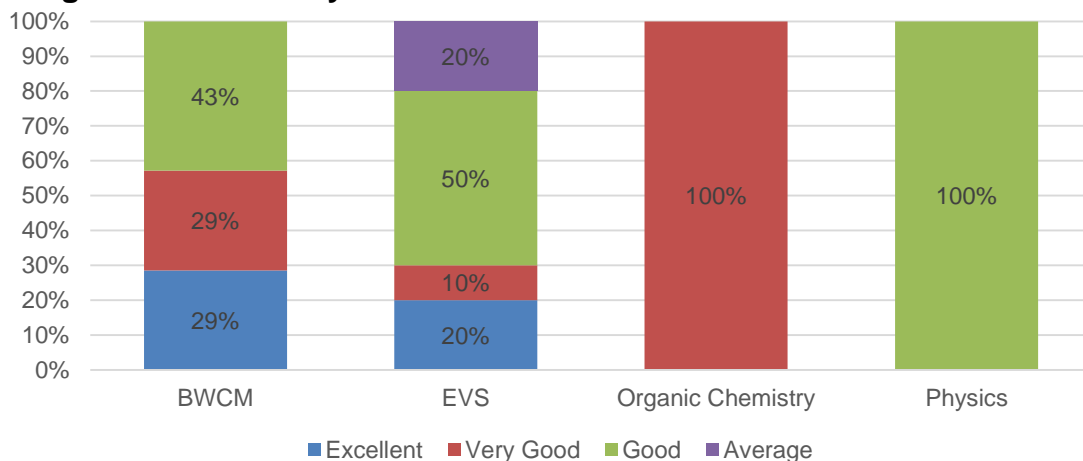
# PG-Teacher's feedback related to Syllabus 2022-23

| Parameter   | MSc part 1  | MSc part 2   |
|---|---|--|
| 1. Design & Content of syllabus                                       |    |    |
| 2. Availability of Sufficient References                              |    |    |
| 3. Suitability for setting question paper                             |   |   |
| 4. Suitability for both slow & fast learners                          |  |  |
| 5. Suitability for employability/ entrepreneurship/ skill development |  |  |
| 6. Significant suggestions  | NIL   | NIL  |

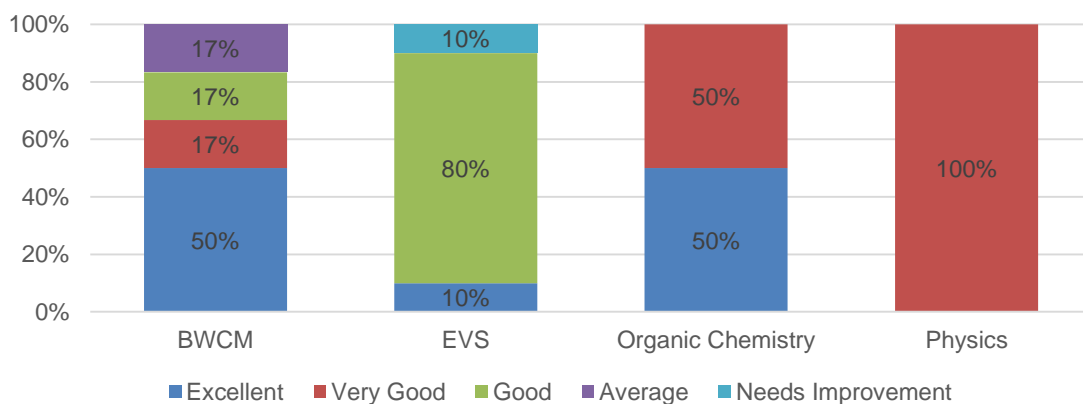
Key - Excellent, Very Good, Good, Average & Needs Improvement

# PG-Alumni feedback related to Syllabus 2022-23

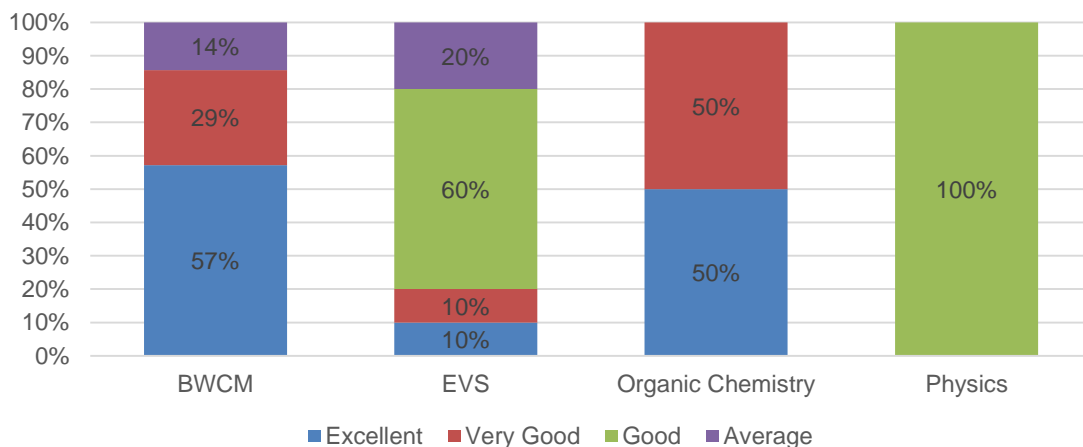
## 1.Design & Content of syllabus



## 2. Innovativeness in syllabus



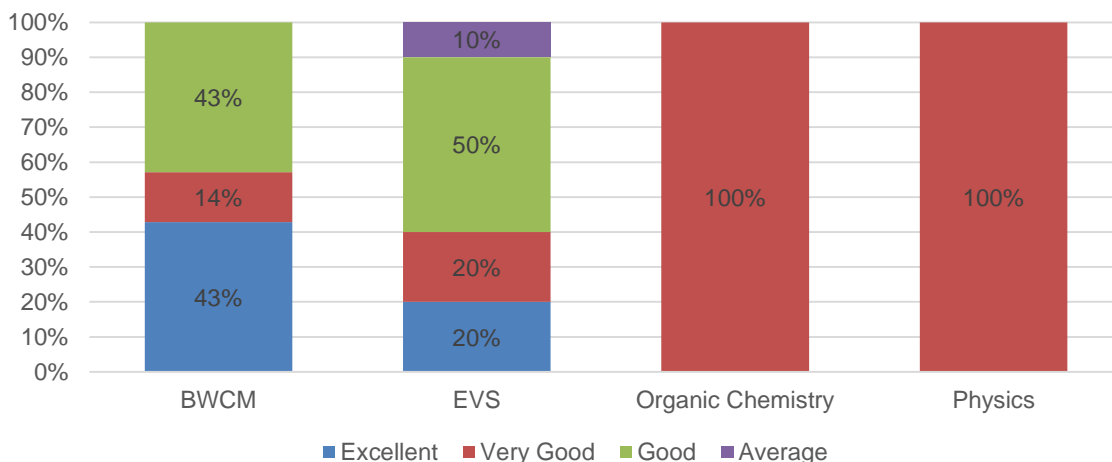
## 3. Knowledge Acquired through syllabus



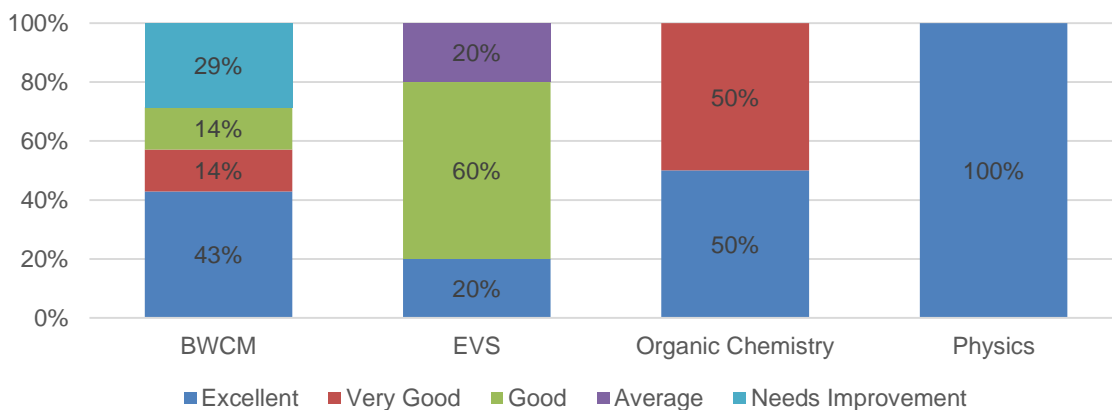
Key - Excellent, Very Good, Good, Average & Needs Improvement

# PG-Alumni feedback related to Syllabus 2022-23

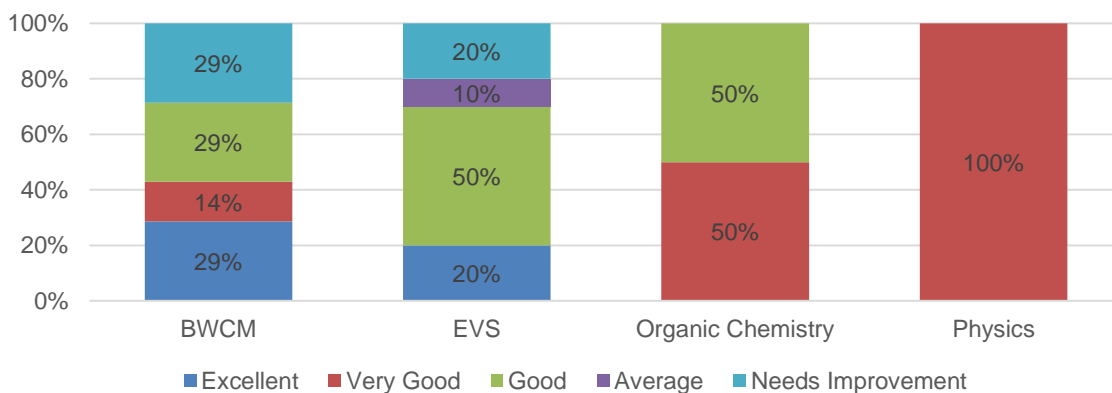
## 4. Topics on environmental sustainability, gender equality, human values and professional ethics



## 5. Suitability for developing employability/ entrepreneurship/ skill development



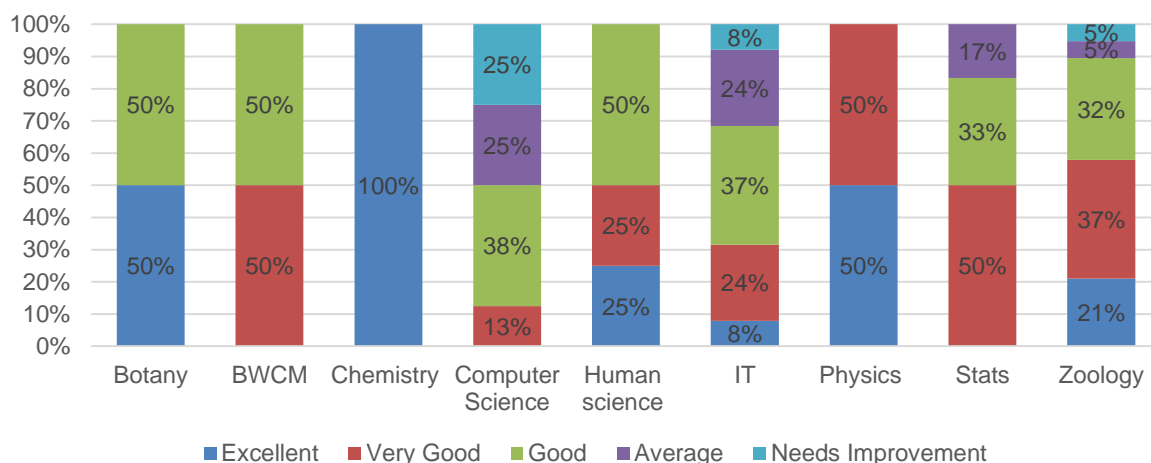
## 6. Suitability for local needs/ job demands



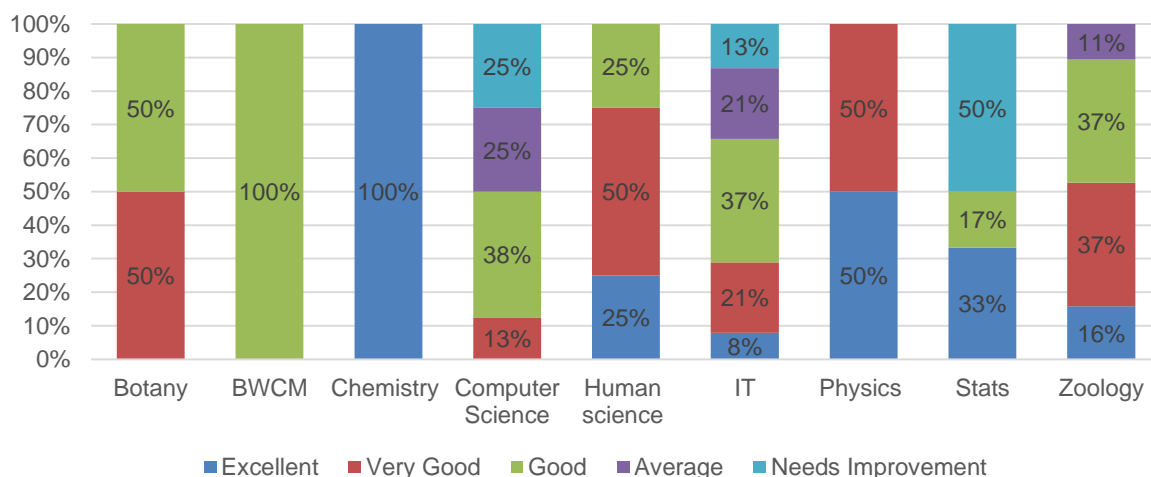
Key - Excellent, Very Good, Good, Average & Needs Improvement

# Employer's feedback related to Syllabus 2022-23

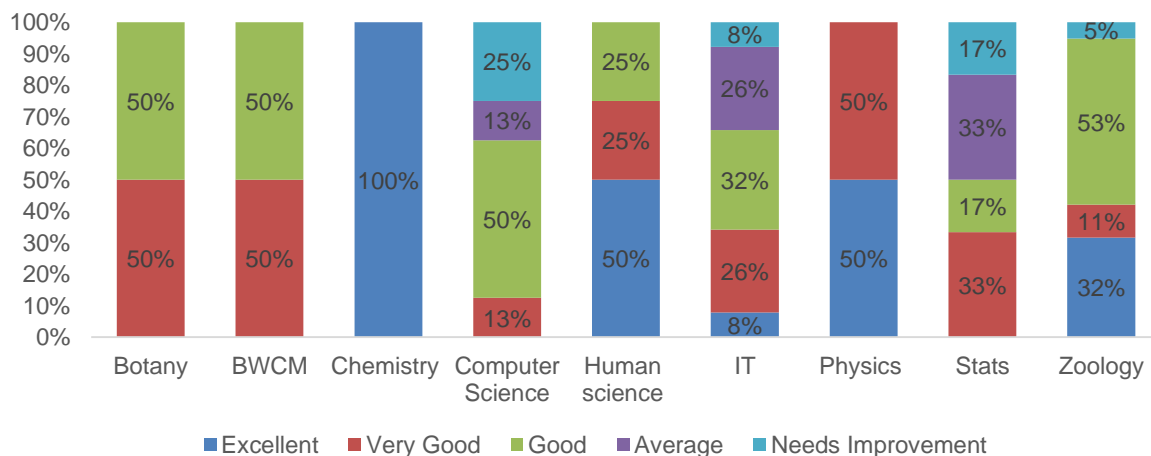
## 1.Design & Content of syllabus



## 2. Compatibility in procuring employment/ entrepreneurship



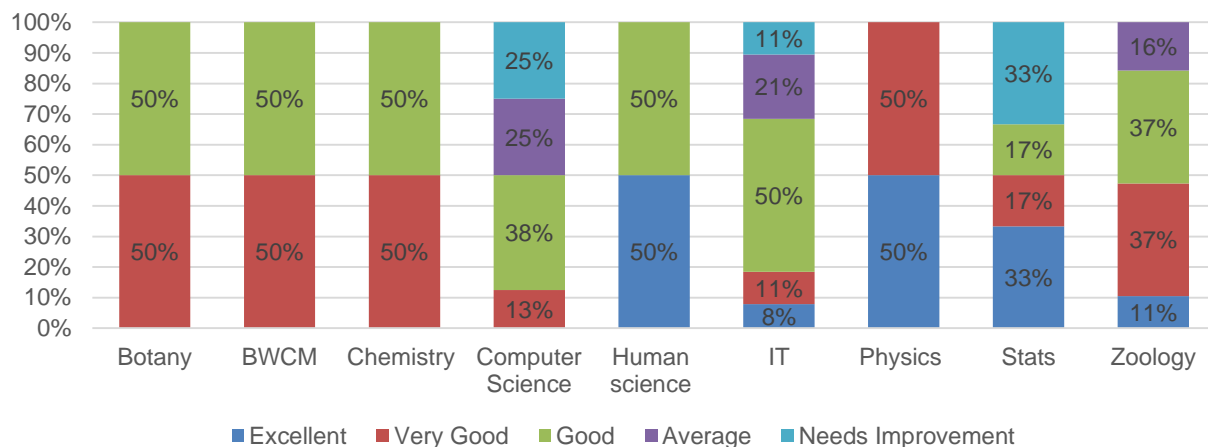
## 3. Compatibility in procuring skill development



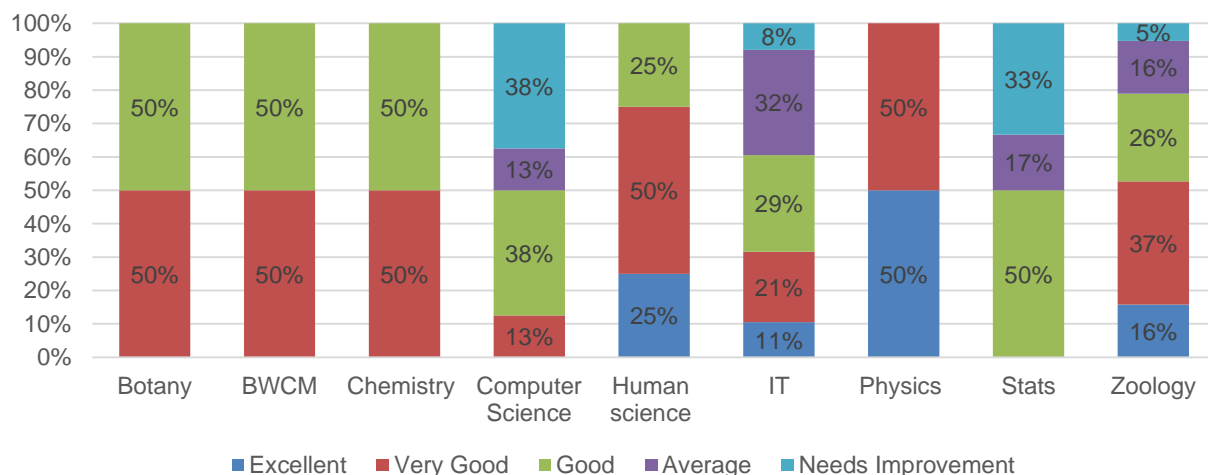
Key - Excellent, Very Good, Good, Average & Needs Improvement

# Employer's feedback related to Syllabus 2022-23

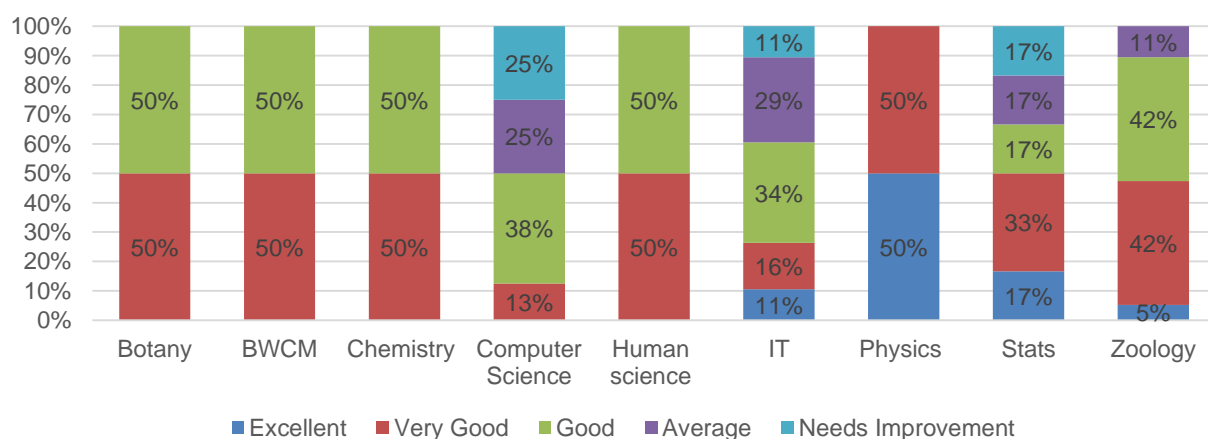
## 4. Incorporation of industry relevant topics



## 5. Incorporation of recent advancements



## 6. Useful for proficiency



Key - Excellent, Very Good, Good, Average & Needs Improvement